

Code: **TS13/1M**Model: **T142000002****Exterior/interior finishing:**

- Stainless steel AISI 304 18/10
- Back in Stainless steel AISI 304

**Insulation:**

- 60 mm thickness - CFC/HCFC free

**Cover evaporator:**

- Removable in stainless steel AISI 304 Cr-Ni 18/10

**Internal racks and slides:**

- Stainless steel AISI 304 18/10

**Inner corners:**

- Rounded cornes ensuring maximum hygiene

**Feet:**

- Stainless steel AISI 304 adjustable 100-150 mm

**Door:**

- Self-closing, reversible with 105° dwell

**Door handle:**

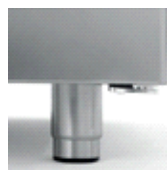
- Stainless steel AISI 304

**Door gasket:**

- Magnetic, easy to replace



Constructional data



• Dimensions	1300×680×810 mm
• Packing dimensions	1320×735×990 mm
• Net weight	110 Kg
• Body height	710 mm
• Temperature range	-2°+8°C
• Cooling capacity	565 W*
• Standard connection	230 V - 50 Hz
• Total rate	546 W - 3,1 A
• Cooling gas	R404a
• Standard equipment	N. 2 plastic coated shelves GN1/1 - 325×530 mm
• *Evap. -10°C cond. 54,4°C	

Features



Plastic coated shelf GN 325×530 mm  
Code O221325530



Pair of slides type C - 505 mm  
Code O121150520



Kit of 4 swivel and brake castors in stainless steel AISI 304  
Code O444000020



Refrigerated drawer 1/2 for counter Master GN1/1  
Code D623012020



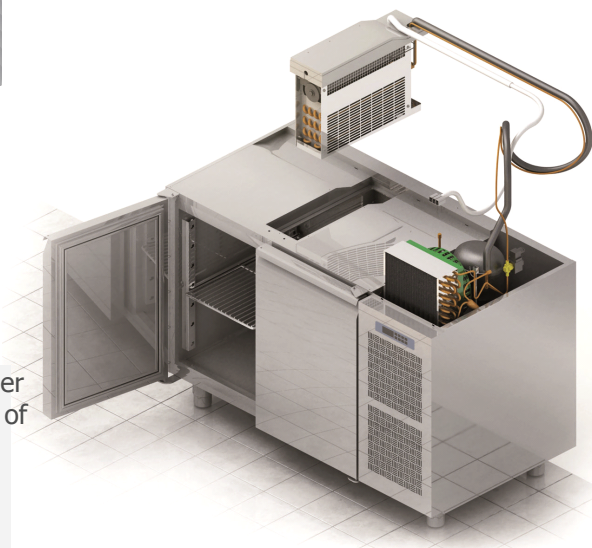
Refrigerated drawer 1/3 for counter Master GN1/1  
Code D623013020



Refrigerated drawer 1/3+2/3 for counter Master GN1/1  
Code D623023020

Accessories

Coldline made major investments in design research, becoming a leader in technology and innovation. Each cabinet marked with the FSSsymbol is equipped with a refrigeration system independent of the structure, which provides improved flexibility and service.



#### FSS • FAST SERVICE SYSTEM

- You can change the intended use of an appliance, a freezer into a chiller - and the other way around - even after years of installation.
- You can extend the life of a refrigeration cabinet by replacing its old refrigeration system with a new one.
- Maintenance and service are simple, quick and do not require specialised personnel.

#### NO-COMPROMISE QUALITY STEEL

**AISI 304**

AISI 304 18/10 is a high quality steel. Its stability guarantees good-looking and durable products, ensuring maximum hygiene and corrosion resistance over time.

**60 mm**

#### INSULATION THICKNESS

The 60 mm thick insulation ensures lower heat loss, reduced work of the compressor, therefore lower energy consumption.

#### HOT GAS DEFROST

Intelligent defrost changes according to the actual presence of frost. The system runs for the minimum time required.



#### EVAPORATION SYSTEM

The automatic evaporation of condensing water is activated only in the presence of water produced as a result of a defrost cycle.



#### CONSTANT TEMPERATURE

The fans stop when the door is opened to reduce temperature changes and consequently reduce the work of the compressor.



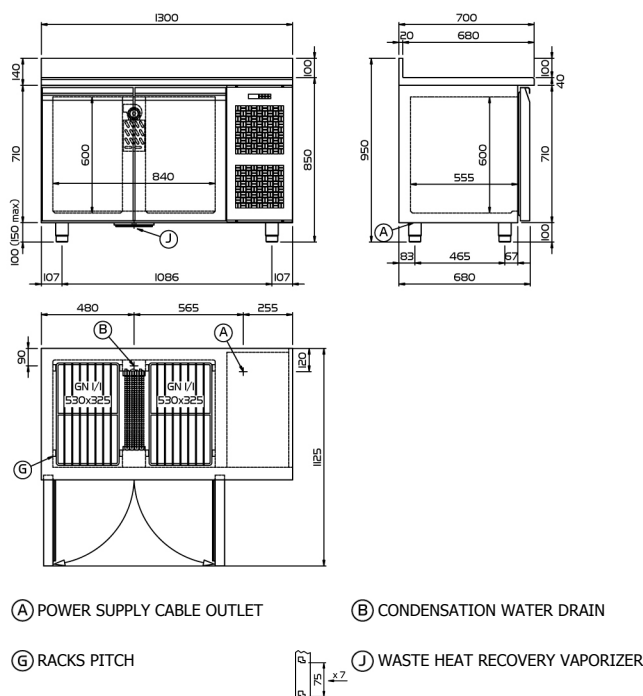
#### ASPERA COMPRESSORS

Aspera compressors reduce energy consumption by 15% and acoustic impact by 5 dBA.



FSS • Fast Service System

Focus



Technical drawing