

Code: **TS13/1MQ**
 Model: **T122000002**

Exterior/interior finishing:

- Stainless steel AISI 304 18/10
- Back in Stainless steel AISI 304

Insulation:

- 60 mm thickness - CFC/HCFC free

Cover evaporator:

- Removable in stainless steel AISI 304 Cr-Ni 18/10

Trays supports:

- Fixed in PVC

Inner corners:

- Rounded cornes ensuring maximum hygiene

Feet:

- Stainless steel AISI 304 adjustable 100-150 mm

Door:

- Self-closing, reversible with 105° dwell

Door handle:

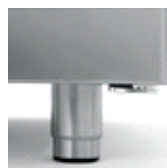
- Stainless steel AISI 304

Door gasket:

- Magnetic, easy to replace



Constructional data



• Dimensions	1300×580×810 mm
• Packing dimensions	1320×635×990 mm
• Net weight	80 Kg
• Body height	710 mm
• Temperature range	-2°+8°C
• Cooling capacity	565 W*
• Standard connection	230 V - 50 Hz
• Total rate	546 W - 3,1 A
• Cooling gas	R404a
• Standard equipment	N. 2 fixed perforated shelves AISI 304 - 325×430 mm
• *Evap. -10°C cond. 54,4°C	

Features



Perforated shelf in stainless steel Master 600 -
 325×425 mm
 Code O263325425



Kit of 4 shelf supports in PVC
 Code O123400020



Kit of 4 swivel and brake castors in stainless
 steel AISI 304
 Code O444000020



Refrigerated drawer 1/2 for counter Master 600
 Code D623012220



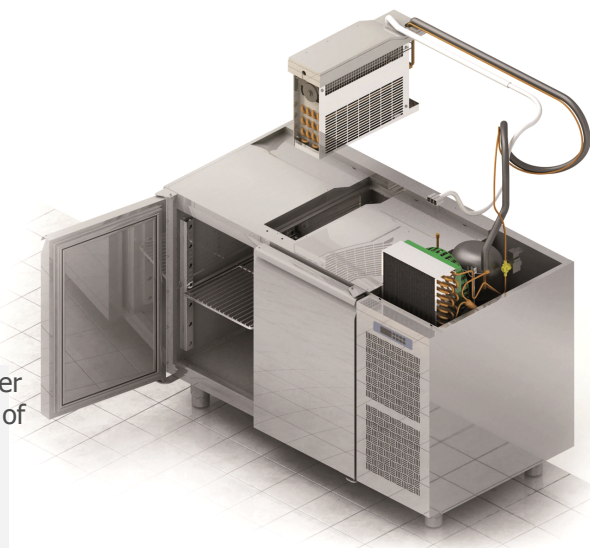
Refrigerated drawer 1/3 for counter Master 600
 Code D623013220



Refrigerated drawer 1/3+2/3 for counter
 Master 600
 Code D623023220

Accessories

Coldline made major investments in design research, becoming a leader in technology and innovation. Each cabinet marked with the FSSsymbol is equipped with a refrigeration system independent of the structure, which provides improved flexibility and service.



FSS • FAST SERVICE SYSTEM

- You can change the intended use of an appliance, a freezer into a chiller - and the other way around - even after years of installation.
- You can extend the life of a refrigeration cabinet by replacing its old refrigeration system with a new one.
- Maintenance and service are simple, quick and do not require specialised personnel.

NO-COMPROMISE QUALITY STEEL

AISI 304

AISI 304 18/10 is a high quality steel. Its stability guarantees good-looking and durable products, ensuring maximum hygiene and corrosion resistance over time.

60 mm

INSULATION THICKNESS

The 60 mm thick insulation ensures lower heat loss, reduced work of the compressor, therefore lower energy consumption.

HOT GAS DEFROST

Intelligent defrost changes according to the actual presence of frost. The system runs for the minimum time required.



EVAPORATION SYSTEM

The automatic evaporation of condensing water is activated only in the presence of water produced as a result of a defrost cycle.



CONSTANT TEMPERATURE

The fans stop when the door is opened to reduce temperature changes and consequently reduce the work of the compressor.



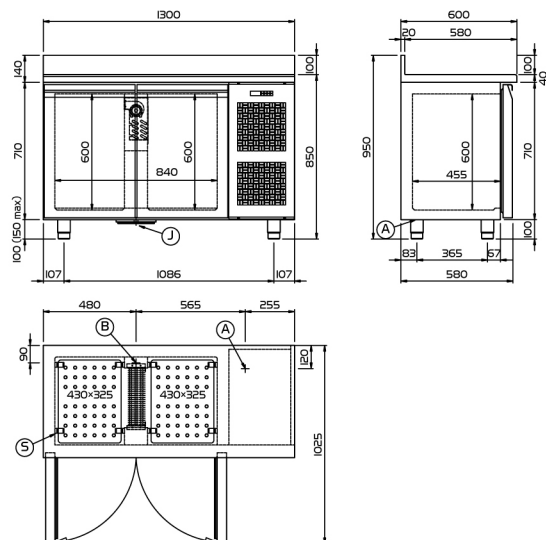
ASPERA COMPRESSORS

Aspera compressors reduce energy consumption by 15% and acoustic impact by 5 dBA.



FSS • Fast Service System

Focus



(A) POWER SUPPLY CABLE OUTLET

(B) CONDENSATION WATER DRAIN

(S) PVC SHELF SUPPORTS

(J) WASTE HEAT RECOVERY VAPORIZER

Technical drawing