

Code: **TS21/1MQ**  
Model: **T124000002**

**Exterior/interior finishing:**

- Stainless steel AISI 304 18/10
- Back in Stainless steel AISI 304

**Insulation:**

- 60 mm thickness - CFC/HCFC free

**Cover evaporator:**

- Removable in stainless steel AISI 304 Cr-Ni 18/10

**Trays supports:**

- Fixed in PVC

**Inner corners:**

- Rounded cornes ensuring maximum hygiene

**Feet:**

- Stainless steel AISI 304 adjustable 100-150 mm

**Door:**

- Self-closing, reversible with 105° dwell

**Door handle:**

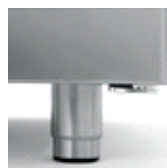
- Stainless steel AISI 304

**Door gasket:**

- Magnetic, easy to replace



Constructional data



• Dimensions	2260×580×810 mm
• Packing dimensions	2280×635×990 mm
• Net weight	140 Kg
• Body height	710 mm
• Temperature range	-2°+8°C
• Cooling capacity	565 W*
• Standard connection	230 V - 50 Hz
• Total rate	546 W - 3,1 A
• Cooling gas	R404a
• Standard equipment	N. 4 fixed perforated shelves AISI 304 - 325×430 mm
• *Evap. -10°C cond. 54,4°C	

Features



Perforated shelf in stainless steel Master 600 - 325×425 mm  
Code O263325425



Kit of 4 shelf supports in PVC  
Code O123400020



Kit of 6 swivel and brake castors in stainless steel AISI 304  
Code O446000020



Refrigerated drawer 1/2 for counter Master 600  
Code D623012220



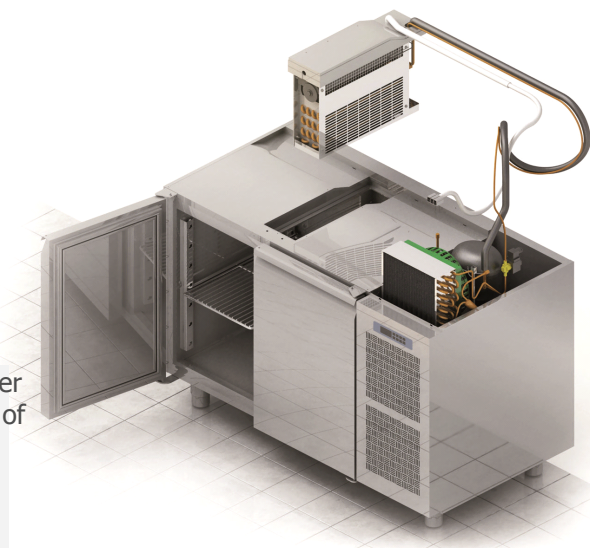
Refrigerated drawer 1/3 for counter Master 600  
Code D623013220



Refrigerated drawer 1/3+2/3 for counter Master 600  
Code D623023220

Accessories

Coldline made major investments in design research, becoming a leader in technology and innovation. Each cabinet marked with the FSSsymbol is equipped with a refrigeration system independent of the structure, which provides improved flexibility and service.



### FSS • FAST SERVICE SYSTEM

- You can change the intended use of an appliance, a freezer into a chiller - and the other way around - even after years of installation.
- You can extend the life of a refrigeration cabinet by replacing its old refrigeration system with a new one.
- Maintenance and service are simple, quick and do not require specialised personnel.

### NO-COMPROMISE QUALITY STEEL

**AISI 304**

AISI 304 18/10 is a high quality steel. Its stability guarantees good-looking and durable products, ensuring maximum hygiene and corrosion resistance over time.

**60 mm**

### INSULATION THICKNESS

The 60 mm thick insulation ensures lower heat loss, reduced work of the compressor, therefore lower energy consumption.

### HOT GAS DEFROST

Intelligent defrost changes according to the actual presence of frost. The system runs for the minimum time required.



### EVAPORATION SYSTEM

The automatic evaporation of condensing water is activated only in the presence of water produced as a result of a defrost cycle.



### CONSTANT TEMPERATURE

The fans stop when the door is opened to reduce temperature changes and consequently reduce the work of the compressor.



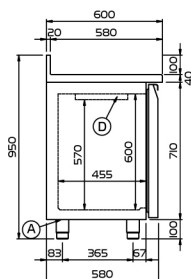
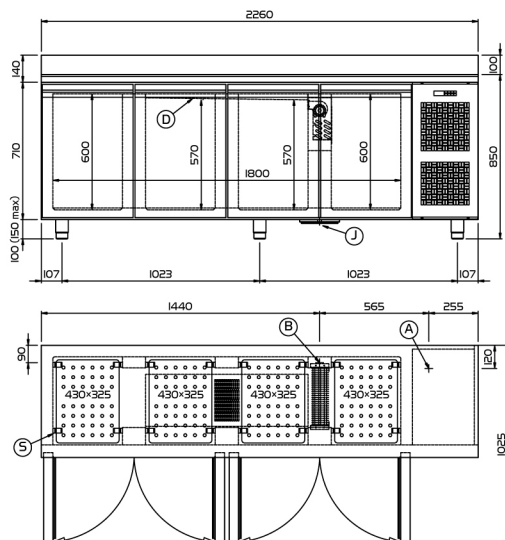
### ASPERA COMPRESSORS

Aspera compressors reduce energy consumption by 15% and acoustic impact by 5 dBA.



FSS • Fast Service System

Focus



(A) POWER SUPPLY CABLE OUTLET

(B) CONDENSATION WATER DRAIN

(D) AIR FLOW CONVEYOR

(S) PVC SHELF SUPPORTS

(J) WASTE HEAT RECOVERY VAPORIZER

Technical drawing